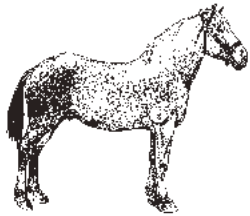




# WHIPPERSNAPPER MENU



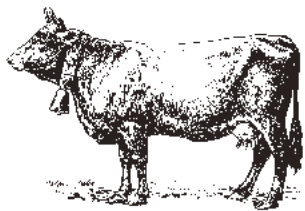
What's the oldest recorded horse?  
A: A 19th-century horse named Old Billy reportedly lived 62 years.

---



What percentage of its day does a trout spend foraging for food?  
A: 80%

---



What's the cattle versus human population in Montana?  
A: 1,015,165 Humans  
2,550,000 Cattle  
Ratio is 2.51

---



How many pounds of food does a moose eat a day?  
A: 60

## MORNING GRUB

Silver Dollar Pancakes

Maple Syrup

Organic Farm-Fresh Scrambled Eggs\*

Hutterite Bacon, Game or Pork

Sausage, Fried Potatoes

Brioche French Toast

Maple Syrup

Assorted Breakfast Cereals

Homemade Granola,

Milk

## ALL-DAY GRAZING

Big Sky Beef Burger\*

Big Sky Cheeseburger\*

Creamy Mac and Cheese

Margherita Cheese Pizza

Pepperoni Cheese Pizza

Crispy Chicken Strips

Grilled Cheese

Buttered Noodles

Beef Hot Dog

Pasta with Marinara Sauce

Grilled Chicken Breast

## THIS, THAT AND OTHER STUFF

Green Salad with Ranch Dressing

Vegetable Sticks with Ranch Dressing

Sweet Potato Fries

French Fries

Seasonal Fruits

Today's Cookie Selection

## SIP, SUCK, SLURP

Choice of Regular, Low Fat, Skim Milk

Assorted Juices

Selection of Soft Drinks

*\*Consumption of any raw or undercooked animal products can be hazardous to your health.*



How much food does a hummingbird eat a day?

A: Twice its body weight

---



What is the sound an elk makes?

A: Bugle

---



Name the three types of bears found at Paws Up.

A: Black, brown and grizzly

---



How many degrees can an owl turn its head?

A: 270°